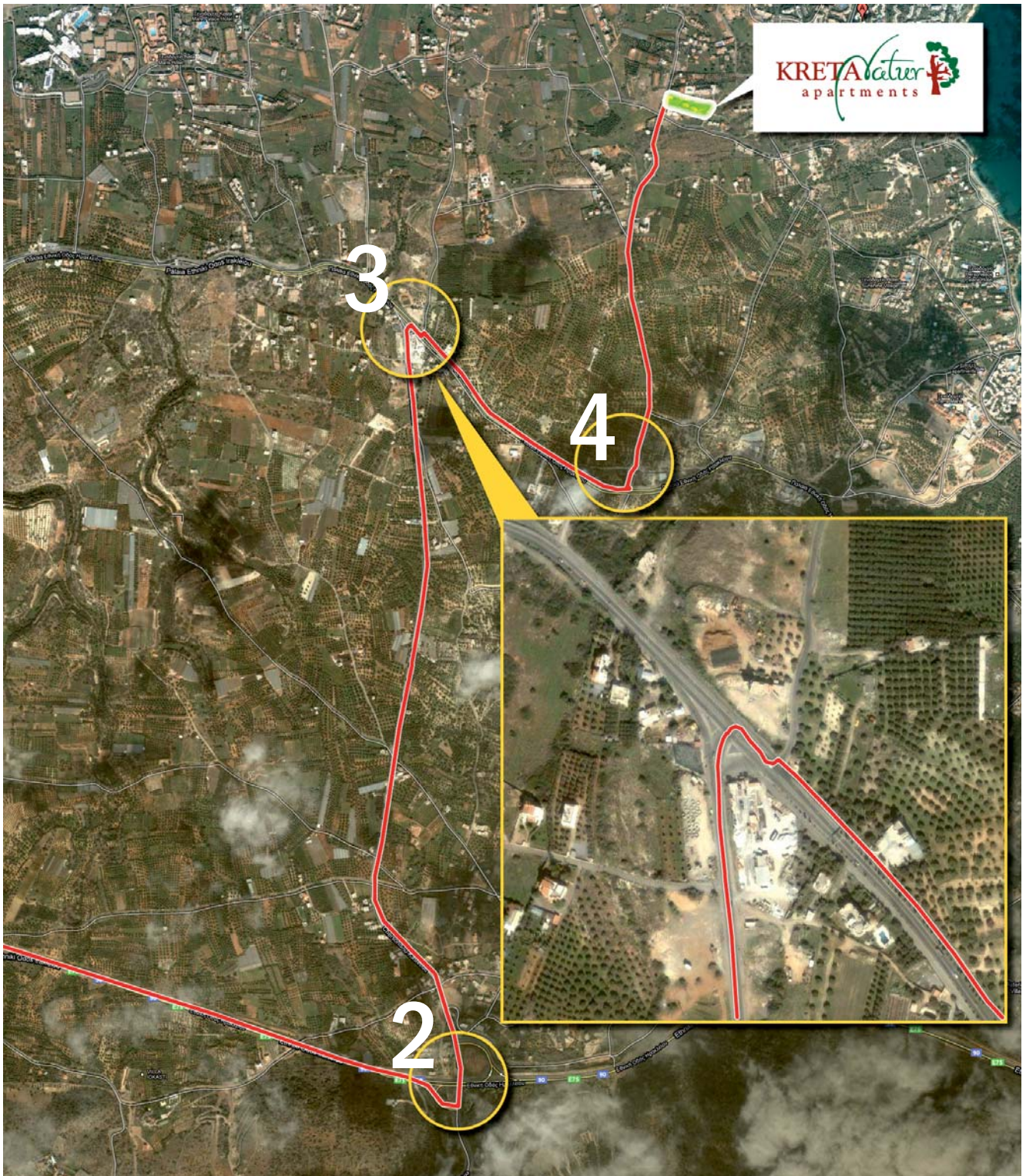


Directions to Kreta Natur from Heraklion Airport (HER)



1. From the airport, take the new national highway towards Aghios Nikolaos. In 15km, you will pass a Shell gas station on your right.

2. After 6km more, take the Port Hersonissos exit on the right. Turn left at the exit to cross under the new national highway you were just on. Continue for 3km until you reach the old national road.

3. At this intersection you will need to cross the national road and turn right immediately on the other side of the metal road railing onto the parallel frontage road. The railing and white painted small trees will be on your right.

4. Continue on this frontage road and make a left turn on the 1st paved road on the left in roughly 200m. At the fork in the road with the pink café, stay right. Continue just past Super Market Cava. Kreta Natur will be on the right immediately after the super market.

Landline: +30-28970-23511 | Mobile: +30-6944-172560